

Why support medical research?

# THE FUTURE IS PURCHASED BY THE PRESENT

Samuel Johnston

## I WISH TO SUPPORT THE AHMRF.

*The value of medical research cannot be over-estimated. We must invest time and money into present day research if we are to have a healthy future.*

*We are grateful for the assistance of the many corporate bodies and trusts that provide funding to support research at Austin Health through the AHMRF.*

Please find my donation to the **AHMRF** in the form of a cheque for:

\$ \_\_\_\_\_

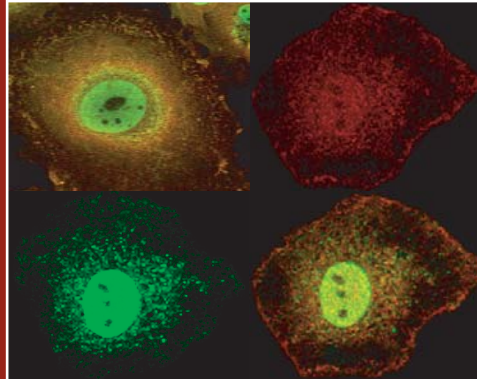
Name: \_\_\_\_\_

Address: \_\_\_\_\_  
\_\_\_\_\_  
\_\_\_\_\_

Phone: \_\_\_\_\_

### HOW YOU CAN SUPPORT MEDICAL RESEARCH AT AUSTIN HEALTH.

*You can help the AHMRF support medical research at Austin Health by making a donation. Donations to the AHMRF of \$2 and over are tax deductible. Donations can support a specific research project, a particular research group or research into a particular disease e.g. cancer or diabetes. Unspecified donations are used to support high quality research projects selected by the Research Advisory Committee. It is a matter of policy that every dollar donated to the AHMRF goes directly to supporting research.*



## AUSTIN HOSPITAL MEDICAL RESEARCH FOUNDATION

Studley Road, Heidelberg  
Victoria 3084  
AUSTRALIA

ABN 11 004 857 827

Telephone: (+61 3) 9496 3410  
Facsimile: (+61 3) 9496 3497  
Email: [ahmrf@austin.org.au](mailto:ahmrf@austin.org.au)  
Web: [www.ahmrf.org.au](http://www.ahmrf.org.au)

## THANK YOU FOR YOUR SUPPORT

*Donations of \$2.00 or more are tax deductible*

## ABOUT THE AHMRF

*The Austin Hospital Medical Research Foundation (AHMRF) was established in 1970 as an Independent Company Limited by Guarantee, to promote medical research at Austin Health. It has grown steadily over the years providing researchers at Austin Health with vital financial support. Austin Health is one of the major hospital precincts in Melbourne with a leading role in medical research and education.*

### **Our Objective**

*"To promote medical research of any kind and to encourage and advance investigation into the cause, prevention, diagnosis and treatment of all types of illness and in any or all of those branches of science which are relevant or related to this purpose".*

## HOW DOES THE AHMRF SUPPORT MEDICAL RESEARCH?

*The AHMRF supports medical research at Austin Health with over \$350,000 awarded in grants each year.*

*Applications for funding are received from research groups working in all areas of medical research. These applications are considered by an expert Research Advisory Committee that ranks them according to their scientific merit.*

*The AHMRF supports newly qualified researchers begin independent research projects or established groups to work on a new area of research.*

*The AHMRF also administers grants provided to Research Teams at Austin Health from external funding organisations, such as the National Health and Medical Research Council and the National Heart Foundation.*

## MEDICAL RESEARCH AT AUSTIN HEALTH

*There are many areas of medical research activity at Austin Health, encompassing laboratory and clinical research into the major diseases affecting our communities. These include diabetes, heart disease, renal disease, cancer including cancers of prostate and lung, epilepsy and stroke,*

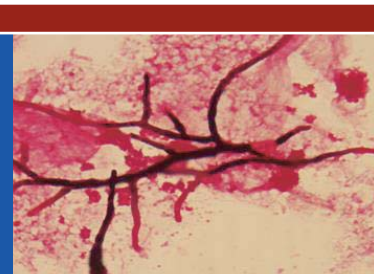
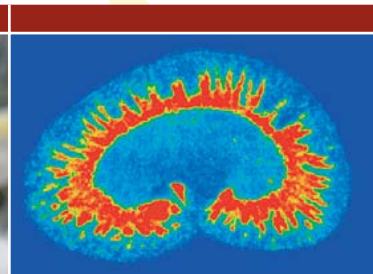
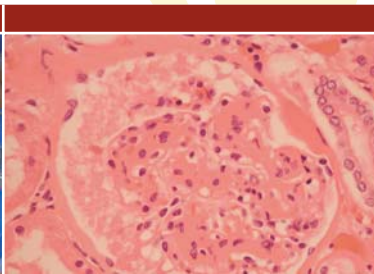
*Recent funding has allowed important advances towards the following research goals.*

**Epilepsy and Stroke:** *Identification of patients at risk by development of early diagnostic procedures, improved diagnostic imaging and therapeutic strategies.*

**Diabetes and Heart Disease:** *Identification of diabetic patients at risk of heart disease and development of relevant treatment.*

**Cancer:** *Identification of factors, which promote cancer growth and subsequent development of drugs targeting specific types of cancer.*

**Osteoporosis:** *Identification of patients at risk of developing osteoporosis and the design of early intervention strategies.*



AUSTIN HOSPITAL  
MEDICAL RESEARCH  
FOUNDATION